

# INSTALLATION MANUAL

# Valor® L3 Series



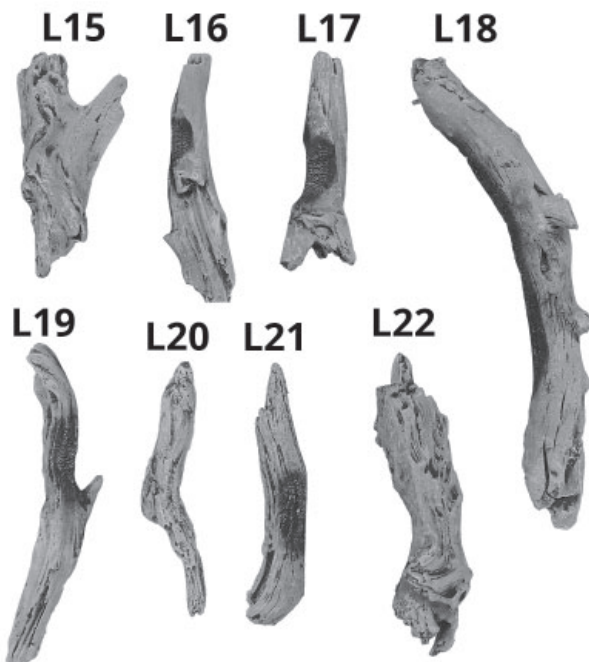
## 1800DWKV2 Driftwood Log Kit

Use with Valor L3 1800 Heater Models ONLY

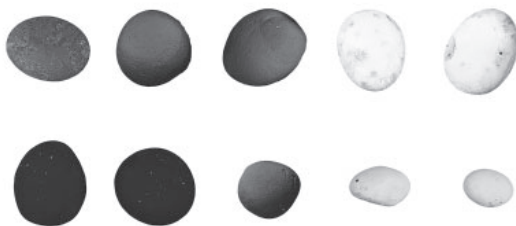
### Materials Required

1800DWKV2 Driftwood Log Kit, which contains:

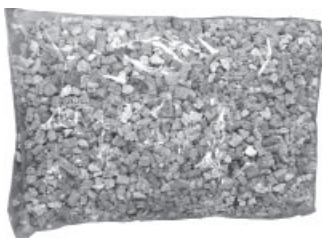
- 8 Driftwood logs



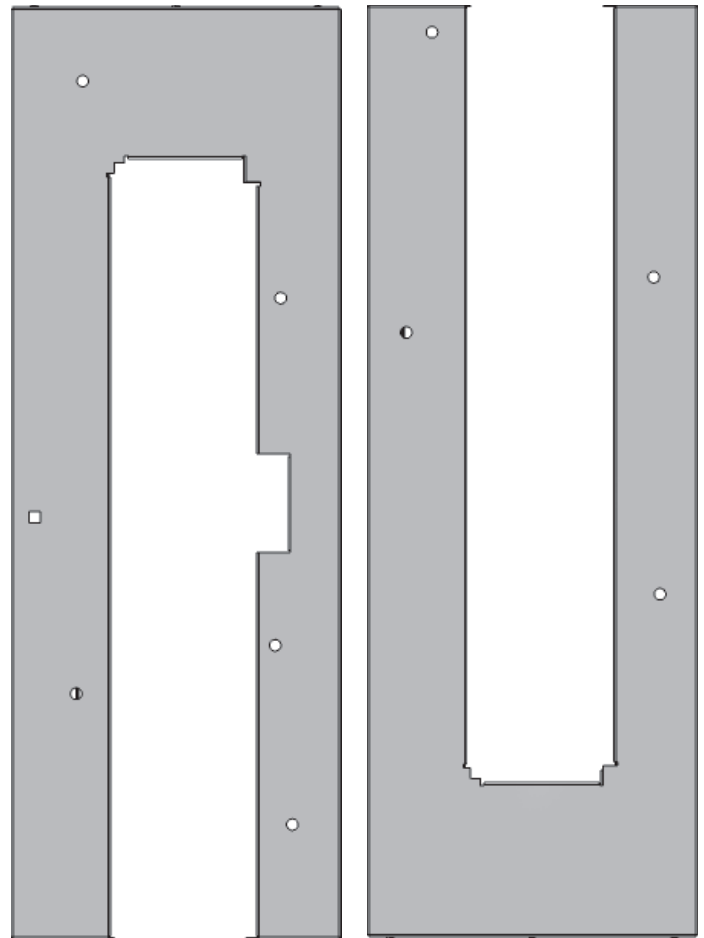
- 10 pebbles of assorted colors



- 1 bag of beige vermiculite



- Left and right hand platforms

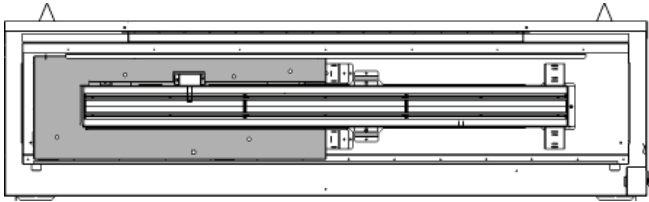


Left

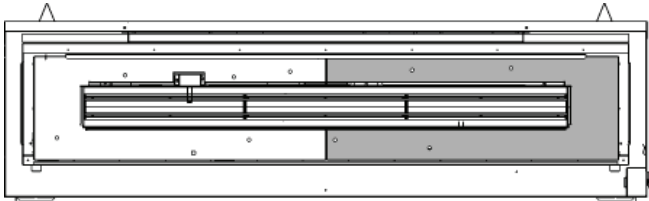
Right

## Installation

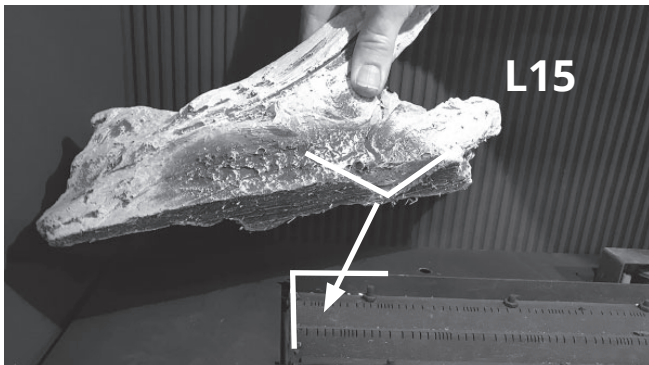
1. Place left hand media platform around the burner as shown. The platform rests in place and is not screwed down.



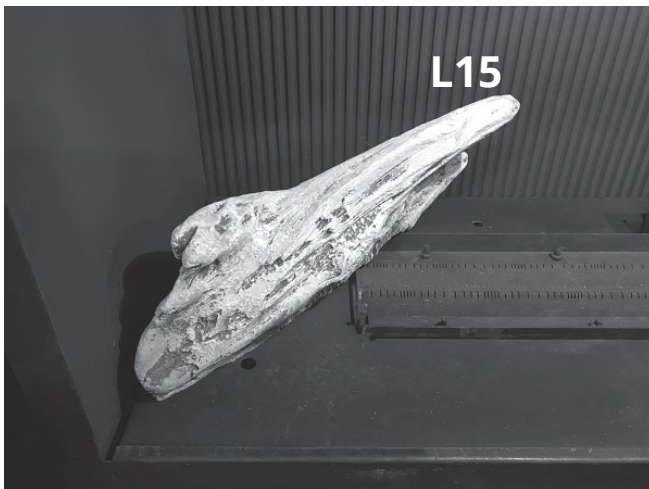
2. Place right hand media platform around the burner as shown. The platform rests in place and is not screwed down.



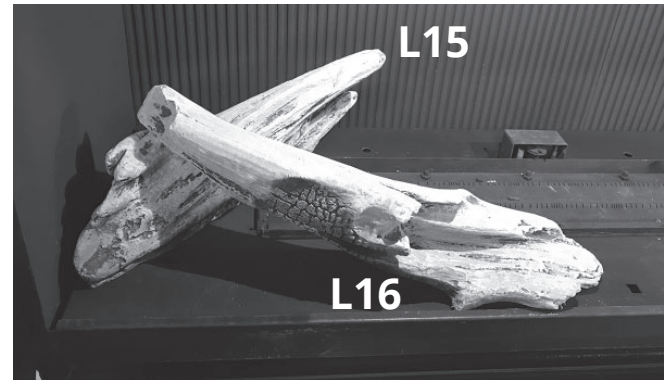
3. Find log L15 and turn it over. Locate the right angle cutout in the bottom of the log. This corresponds with the right angle of the burner corner.



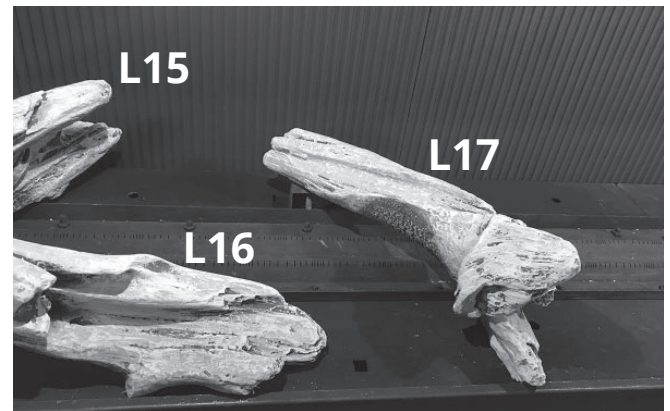
4. Place log L15 over the burner corner, resting on the media platform.



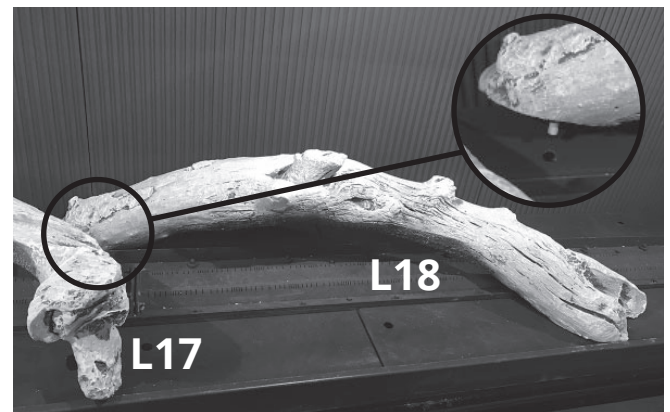
5. Place log L16 on top of L15, across the burner, to the front of the media platform as shown.



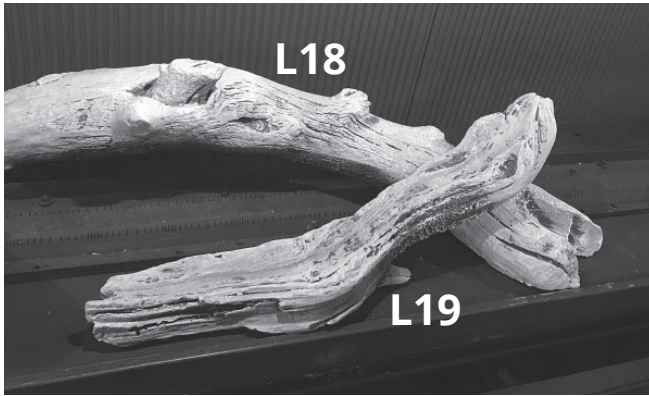
6. Place log L17 on top of the pilot shield, across the burner, to the front of the media platform as shown.



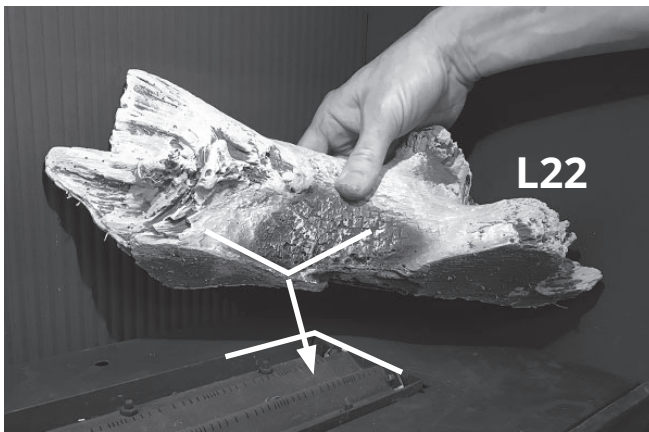
7. Place the pin on log L18 into the hole on the rear media platform. Place L18 over the burner to the front of the media platform as shown.



8. Place log L19 on top of L18 as shown. Rest the other end on the front of the media platform.



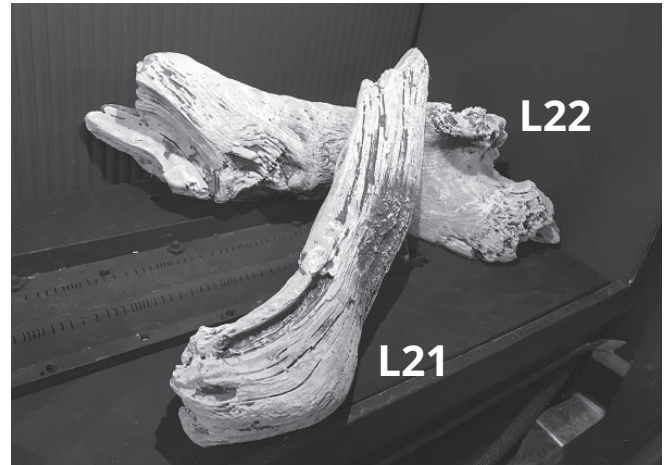
9. Find log L22 and turn it over. Locate the right angle cutout in the bottom of the log. This corresponds with the right angle of the burner corner.



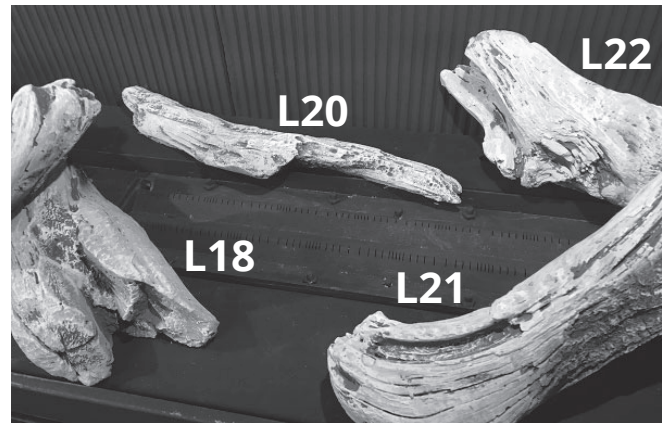
10. Place log L22 over the burner corner, resting on the media platform.



11. Place log L21 on top of L22, resting on the front of the media platform.



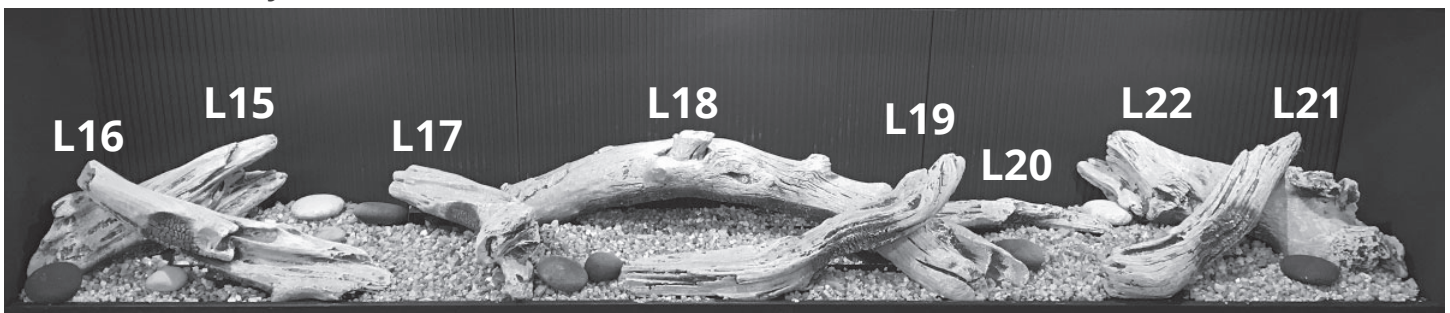
12. Place log L20 on the rear of the media tray, between L18 and L22.



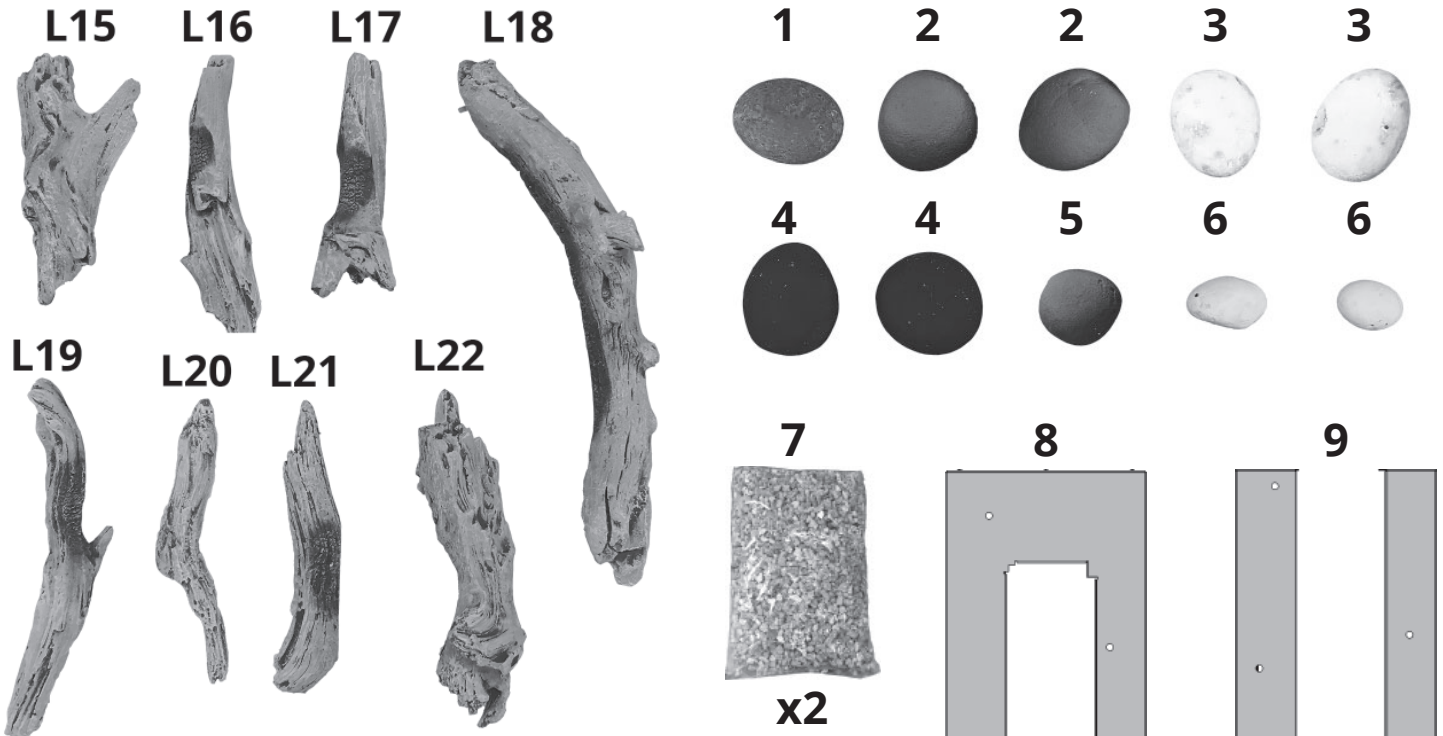
13. Place vermiculite by hand (do not pour vermiculite as the bag contains dust particles that could block the burner ports) and cover the burner, and onto the surrounding media tray as well.

14. Place pebbles on the vermiculite to your preference.

## Finished Assembly



## Repair Parts List



ID	Quantity	Description	Part Number
L15	1	Driftwood Log L15	4007985
L16	1	Driftwood Log L16	4007986
L17	1	Driftwood Log L17	4007987
L18	1	Driftwood Log L18	4007988
L19	1	Driftwood Log L19	4007989
L20	1	Driftwood Log L20	4007990
L21	1	Driftwood Log L21	4007991
L22	1	Driftwood Log L22	4007992
1	1	Brown Beach Pebble	4003082
2	2	Grey Beach Pebble	4003083
3	2	White Beach Pebble	4003084
4	2	Black Beach Pebble	4003085
5	1	Small Grey Beach Pebble	4003086
6	2	Beige Beach Pebble	4003087
7	2	Bag - Grade 1A Beige Vermiculite	4002940
8	1	Right Hand Platform	4004955AH
9	1	Left Hand Platform	4004956AH

Because our policy is one of constant development and improvement, details may vary slightly from those given in this publication.

Designed and Manufactured by / for  
Miles Industries Ltd.

190 - 2255 Dollarton Highway, North Vancouver, B.C., CANADA V7H 3B1

Tel. 604-984-3496 Fax 604-984-0246

www.valorfireplaces.com

# GUIDE D'INSTALLATION

# valor<sup>®</sup> Série L3



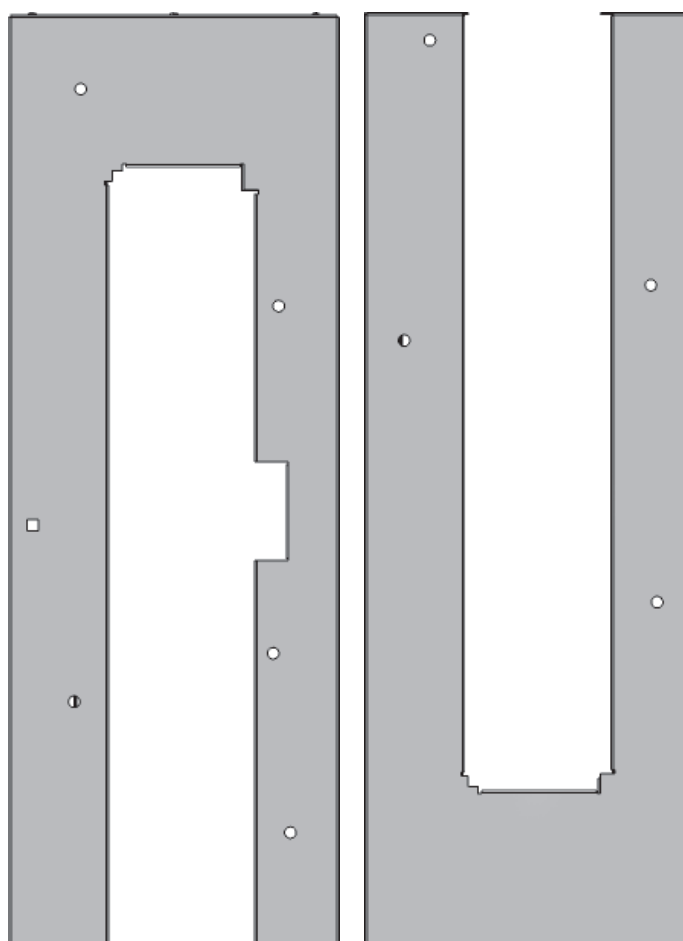
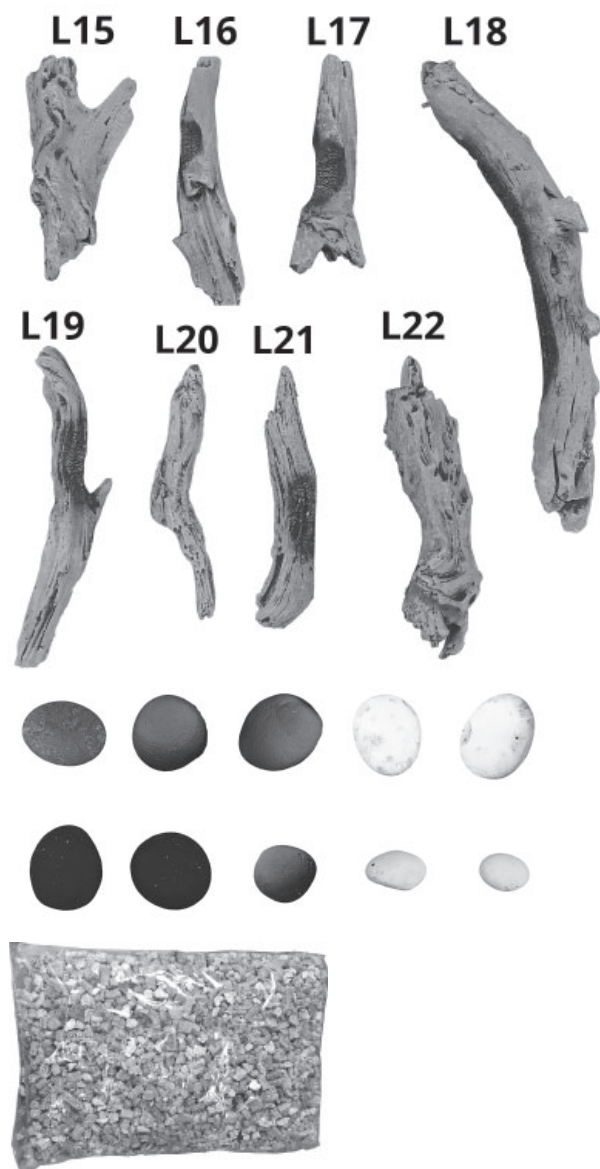
## Bois de grève 1800DWKV2

Utilisez avec les foyers Valor L3 1800 SEULEMENT

### Pièces requises

Ensemble Bois de grève 1800DWKV2 contenant :

- 8 bûches
- 10 galets
- 1 sac de vermiculite
- Plateforme de métal en 2 pièces



Plateforme côté gauche

Plateforme côté droit

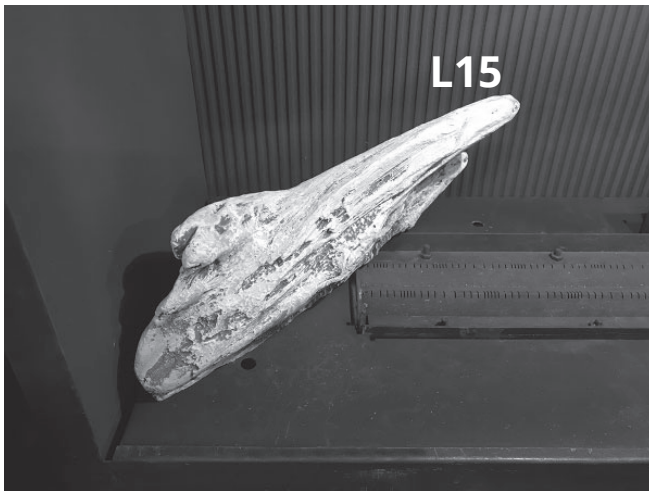
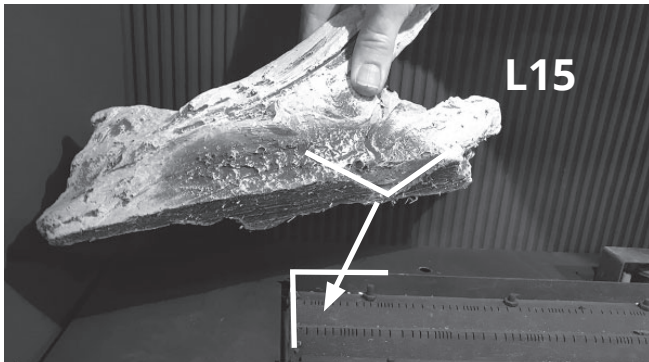
## Plateforme

Placez les deux pièces de la plateforme autour du brûleur tel qu'indiqué. La pièce de gauche est coupée pour la veilleuse. Les ouvertures de la plateforme vont en-dessous.

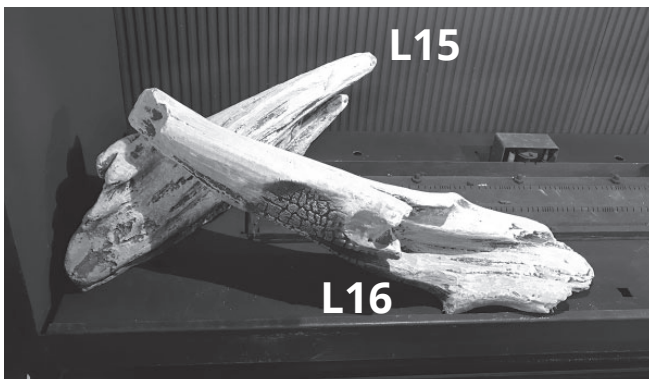
## Bûches

Les directives données dans les pages qui suivent indiquent la meilleure façon de placer les bûches et autres pièces de l'ensemble pour obtenir un feu optimal.

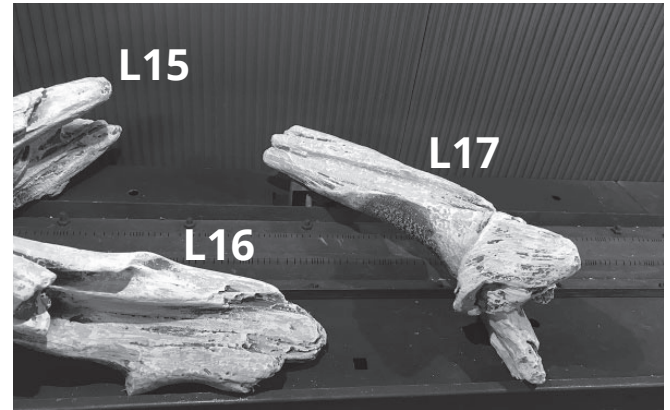
1. Placez la bûche L15 sur le coin arrière gauche du brûleur. Une encoche à angle droit sous la bûche aide à la localiser.



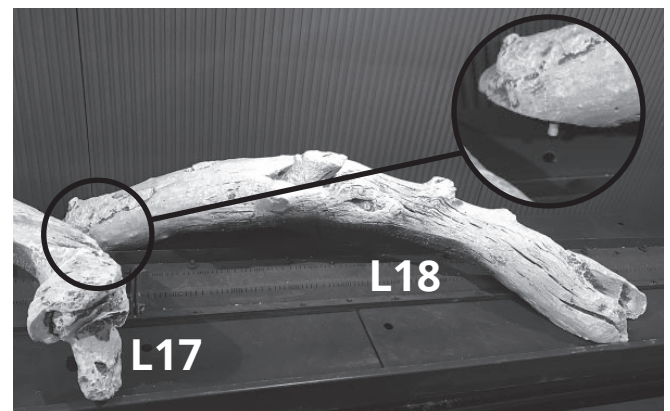
2. Placez le bout étroit de L16 sur L15 et posez le bout plus large sur la plateforme devant le brûleur tel qu'indiqué.



3. Placez le bout large de L17 sur l'écran de la veilleuse et le bout étroit sur la plateforme devant le brûleur tel qu'indiqué.



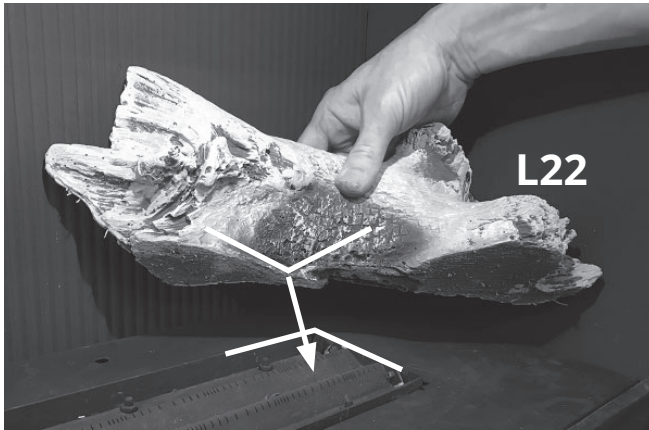
4. Placez L18 à côté de L17 insérant sa cheville dans un trou de la plateforme derrière le brûleur; posez l'autre bout devant le brûleur tel qu'indiqué.



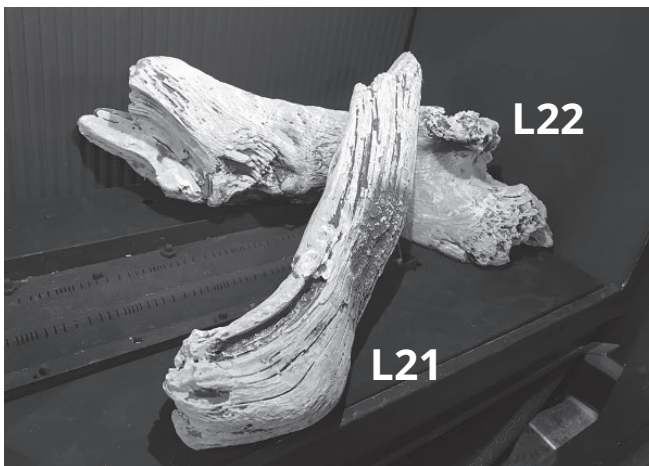
5. Placez L19 devant le brûleur, un bout sur L18 et l'autre sur la plateforme tel qu'indiqué.



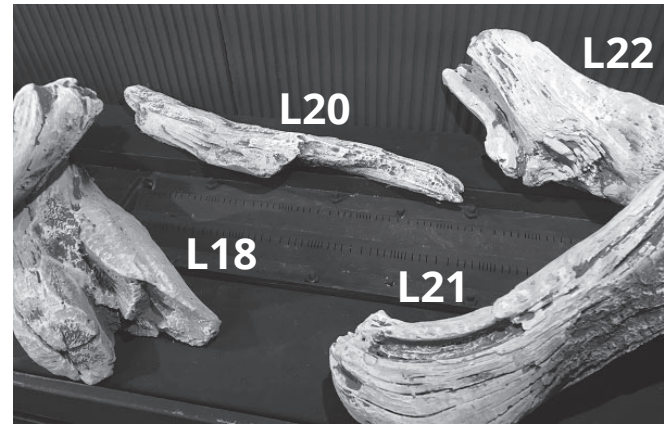
6. Placez L22 sur le coin arrière droit du brûleur. Une encoche à angle droit sous la bûche aide à la localiser.



7. Placez le bout étroit de L21 sur L22 puis le bout plus large sur la plateforme devant le brûleur.



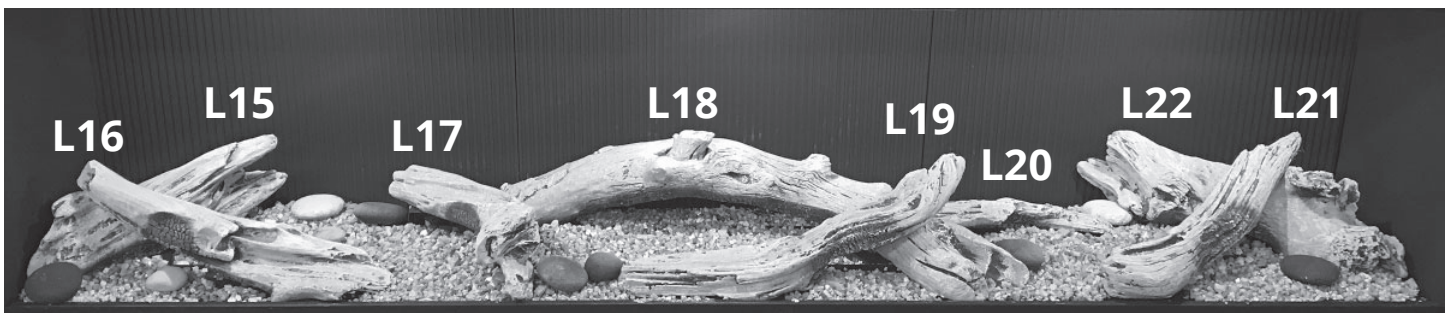
8. Placez L20 derrière le brûleur entre L18 et L22 tel qu'indiqué.



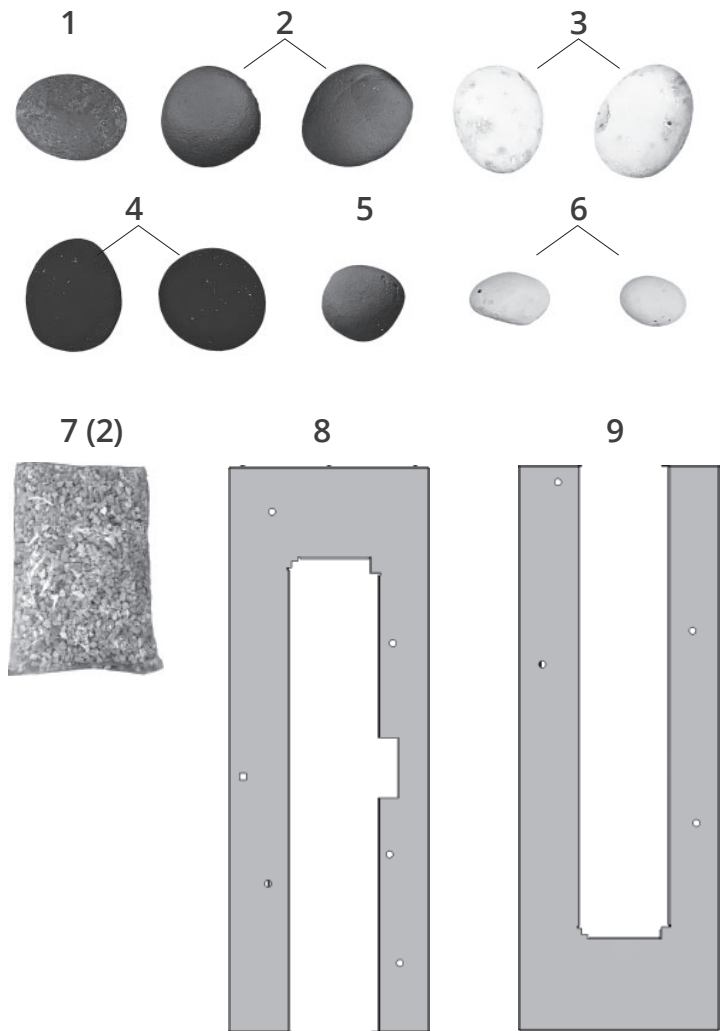
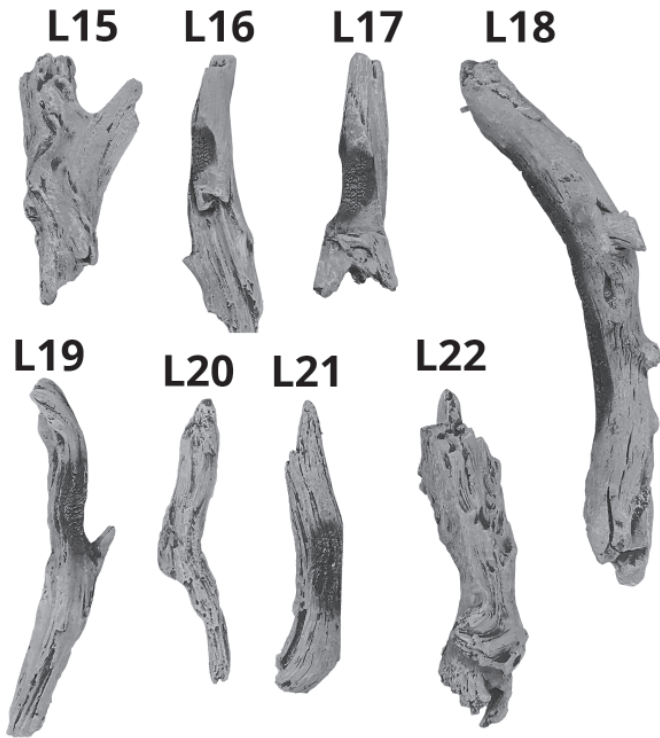
9. Placez de la vermiculite à la main sur le brûleur le couvrant d'une couche puis sur la plateforme autour des bûches. **NE VERSEZ PAS** à partir du sac pour éviter que de la poussière de vermiculite ne bloque les orifices du brûleur.

10. Placez des galets sur la vermiculite selon la préférence du consommateur.

### Ensemble installé



## Pièces de remplacement



ID	Description	Pièce n°
L15	Bûche L15	4007985
L16	Bûche L16	4007986
L17	Bûche L17	4007987
L18	Bûche L18	4007988
L19	Bûche L19	4007989
L20	Bûche L20	4007990
L21	Bûche L21	4007991
L22	Bûche L22	4007992
1	Galet brun	4003082
2	Galets gris (2)	4003083
3	Galets blancs (2)	4003084
4	Galets noirs (2)	4003085
5	Petit galet gris	4003086
6	Galets beiges (2)	4003087
7	Vermiculite beige grade 1A - 2 sacs	4002940
8	Plateforme, côté droit	4004955AH
9	Plateforme, côté gauche	4004956AH

Parce que nous favorisons une politique de développement continu, certains détails de la présente publication peuvent varier.

Conçue et fabriquée par / pour  
Miles Industries Ltd.

190 – 2255 Dollarton Highway, North Vancouver, BC, CANADA V7H 3B1

Tél. 604-984-3496 Téléc. 604-984-0246

[www.foyervalor.com](http://www.foyervalor.com)